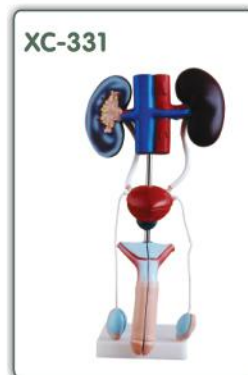


EXCRETORY SYSTEM

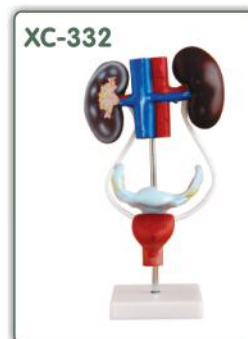
XC-331 Male Urogenital System

This is intended for middle schools as a visual aid in teaching physiology and hygiene to help the students to understand the external features of the urogenital system and the internal structures of the kidney, urinary bladder, penis and testicle. Made of soft PVC plastic.



XC-332 Female Urogenital System

This model serves as a model for teachers to teach students of the female urogenital system in schools and colleges. The model shows kidney, ureters, urinary bladder, uterus, accessories of uterus, vagina, ovary membrane, ligaments, uterus ligament and its artery etc. Made of PVC plastic.



XC-333 Urinary System Model

The model shows the structures of retroperiton alcavity, pelvis with bones and muscles, inferior venacava, aorta with its branches, upper urinary tract, kidney with adrenal gland, ureter, bladder, etc. Dissectible into 4 parts.

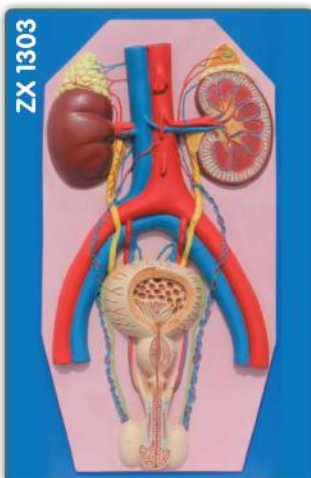


XC-310-3 Human Kidney Macro Structure with Adrenal Gland

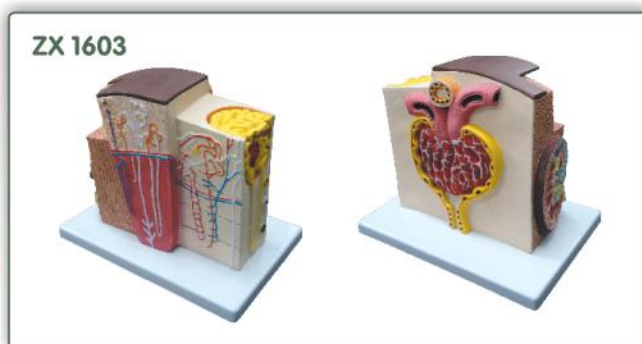
This detailed life-size model features the kidney, adrenal gland, renal and adrenal vessels and upper portion of the ureter. Dissectible into 2 parts to reveal the cortex medulla, cortex vessels and renal pelvis. Model can be removed from the stand for instruction and patient education.



ZX 1303 Human Excretory System



ZX 1603 Kidney Microstructure



Front View

Back View